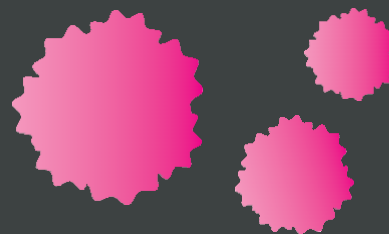


Understanding mantle cell lymphoma (MCL)



What is MCL?



Lymphoma is a type of blood cancer that affects lymphocytes, which are a type of white blood cell that defends the body against infections. In lymphomas, a mutation in lymphocytes causes the abnormal cell to replicate faster than, or live longer than, a normal lymphocyte.¹



The two main types of lymphoma are **Hodgkin lymphoma and non-Hodgkin lymphoma (NHL)**.¹ NHL can occur in either **B cells or T cells** and is usually classified as either **indolent (slow-growing) or aggressive (fast-growing)**.²



MCL is a rare, aggressive or indolent type of NHL, typically resulting when **B-lymphocytes mutate into malignant cells** within a region of the lymph node known as the mantle zone.^{3,4}



There are **multiple factors which impact MCL treatment**, including stage of disease, age and overall health. Those who have a relatively small amount of slow-growing disease may not require immediate treatment, **while those with the more aggressive form may need to be treated quickly**.⁵

MCL fast facts



MCL represents **approximately 6% of all NHL cases in the US**.⁶



Men are more likely to have MCL than women.⁶



The **average age of diagnosis is the mid-60s**.⁶



MCL is often diagnosed as a late-stage disease that has spread to the gastrointestinal tract and bone marrow.³

Common symptoms*

MCL may not appear to have symptoms during the early stages of disease. As the disease progresses, a person may experience^{2,4}:

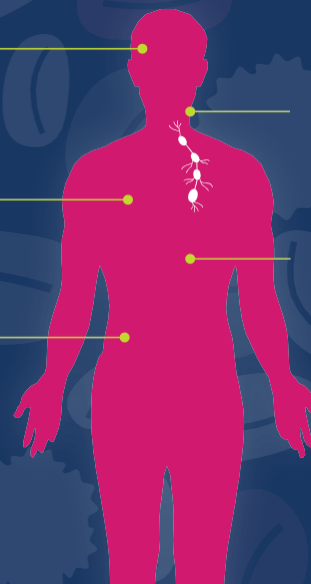
Fever and night sweats

Weakness and fatigue

Abdominal swelling or pain

Painless (often but not always), swollen lymph nodes

Unexplained weight loss



**Symptoms are non-specific and could arise from other less serious conditions.*

References

1. Lymphoma Research Foundation. About Lymphoma. <https://lymphoma.org/aboutlymphoma/>. Accessed November 2020.
2. Lymphoma Research Foundation. Non-Hodgkin Lymphoma (NHL). <https://lymphoma.org/aboutlymphoma/nhl/>. Accessed November 2020.
3. Lymphoma Research Foundation. Mantle Cell Lymphoma. <https://lymphoma.org/aboutlymphoma/nhl/mcl/>. Accessed November 2020.
4. National Organization for Rare Disorders. Mantle Cell Lymphoma. <https://rarediseases.org/rare-diseases/mantle-cell-lymphoma/>. Accessed November 2020.
5. Lymphoma Research Foundation. Mantle Cell Lymphoma: Treatment Options. <https://lymphoma.org/aboutlymphoma/nhl/mcl/mcltreatment/>. Accessed November 2020.
6. Leukemia & Lymphoma Society. Mantle Cell Lymphoma Facts. https://www.lls.org/sites/default/files/file_assets/mantlecelllymphoma.pdf. Accessed November 2020.